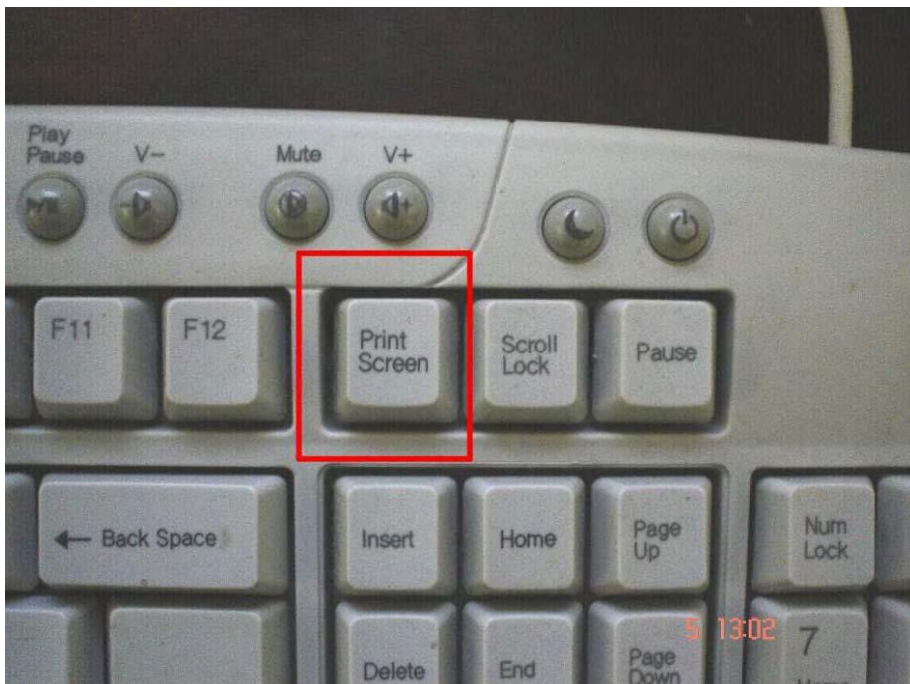


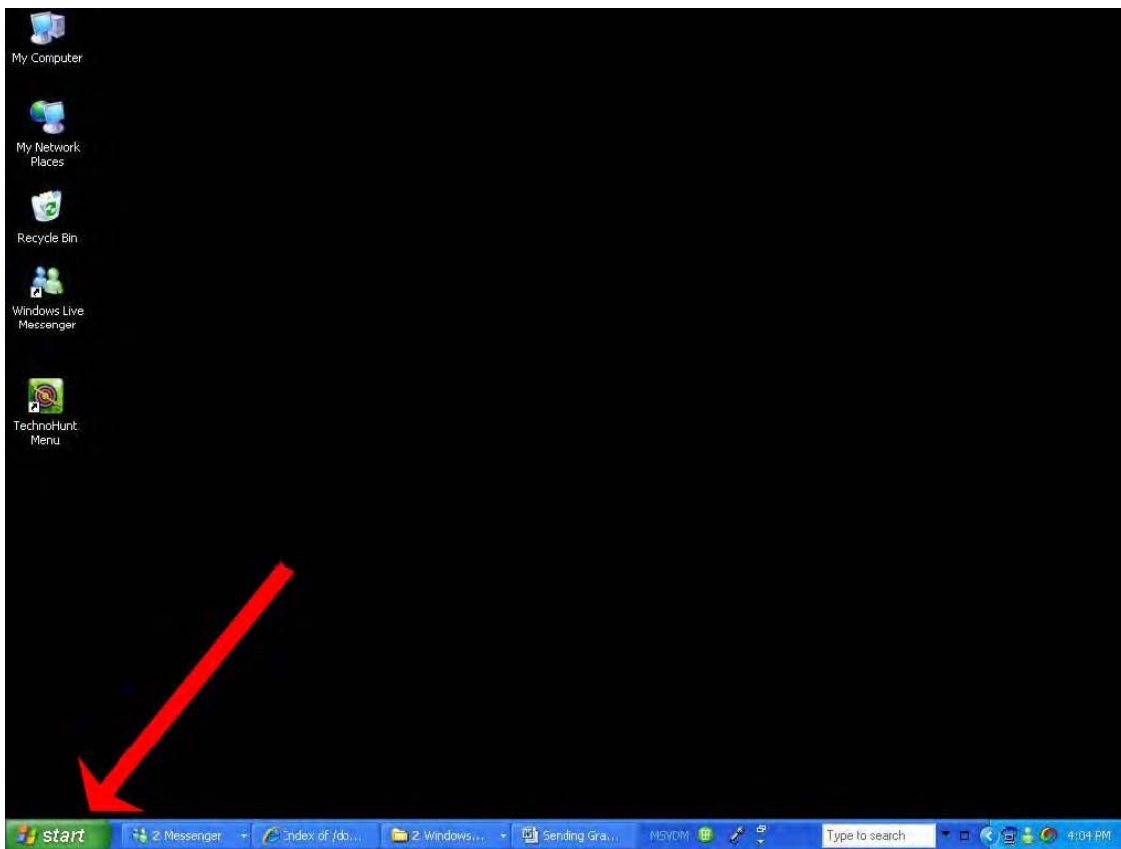


SENDING AND PRINTING GRAPHS: These are the instructions for making graphs ready to either fax or email them to our offices at Archery Interactive. Make sure your sensors are on. 1. Launch Technohunt 2. Select options button from the options and launch window. 3. Select arrow tracker options button 4. Select sensor graph button 5. Select graphs at the top left of that white screen window. You have two sensors, left and right. Follow directions below. There are two ways to send graphs to Archery Interactive. You can either fax your sensor graphs to Archery Interactive, or you can save the graph image to your computer hard drive as a .jpg image format and email it to Archery Interactive. Emailing is our preferred way of receiving graphs because we receive a digital copy which we can put in your customer file. Many times a graph.jpg image will also fit on a floppy disc for easy transport. So try saving it to a floppy disc drive on your Technohunt computer. If your Technohunt computer is connected to the internet you can email your sensor graph image right from your Technohunt computer using many web based email accounts like MSN, Hotmail, Yahoo, etc or the internet provider of your choice. Just make sure you save the graph image to your hard drive, before you close paint. C: drive preferably. Printing Graphs: Control and F2 If holding the control key and F2 key does not work, Use this method: Open the graph in Technohunt for the respective sensor you want a graph for. Open your sensor graph window and press the print screen button, or it could say (print scrn sysRq) on your keyboard. This key is located in the upper right section of your keyboard.

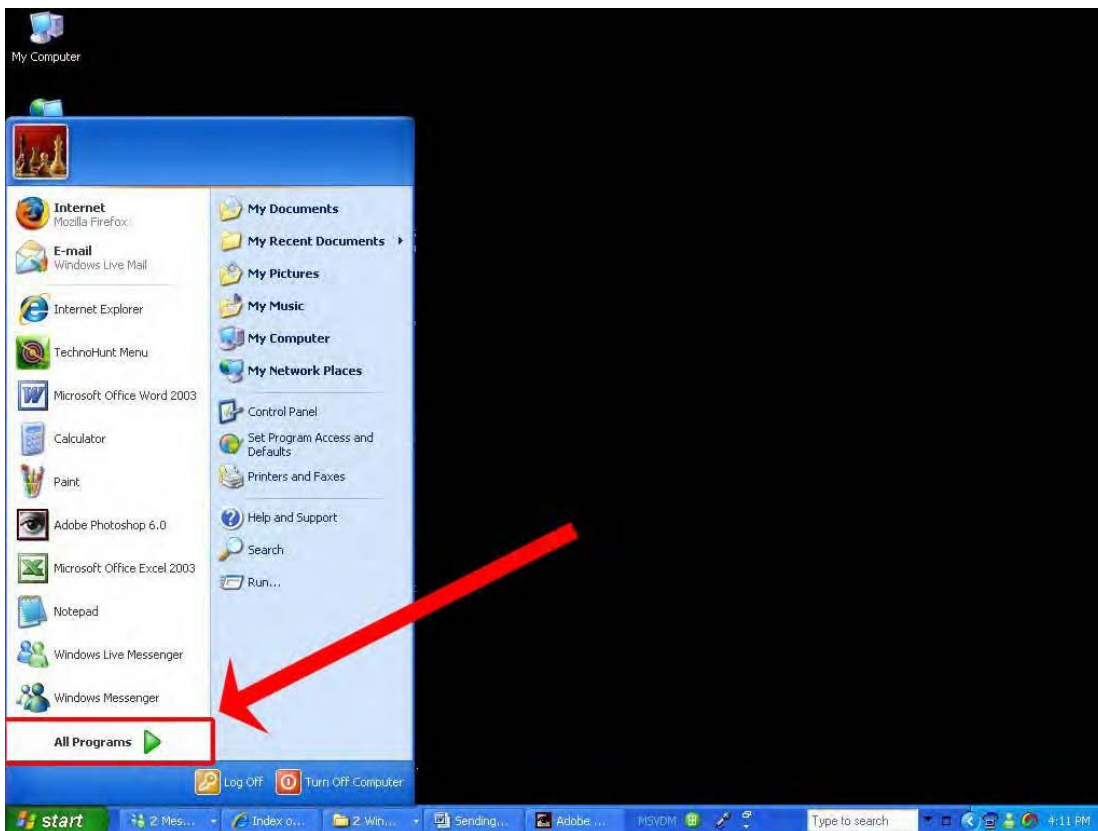
Now close the graph window and exit Technohunt and to your windows desktop.



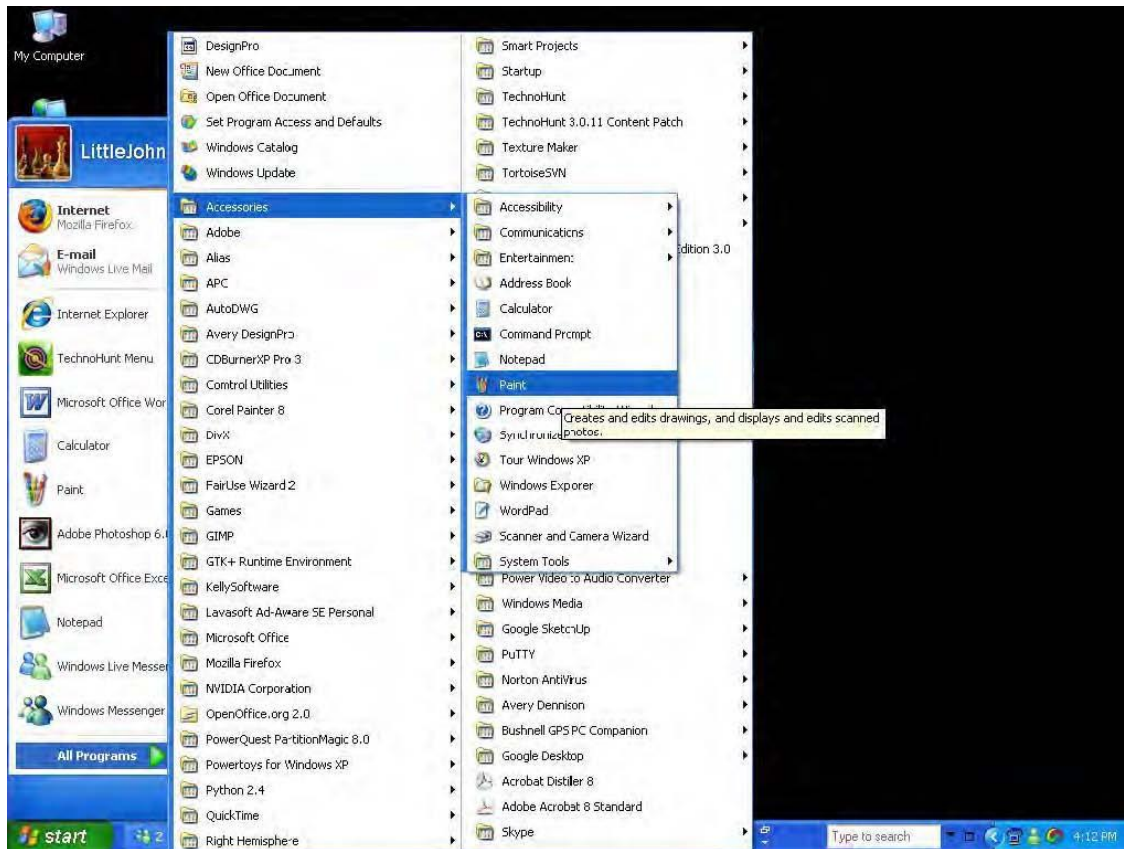
In your desktop window, move your mouse pointer to your Windows “Start” button on your taskbar in Windows,



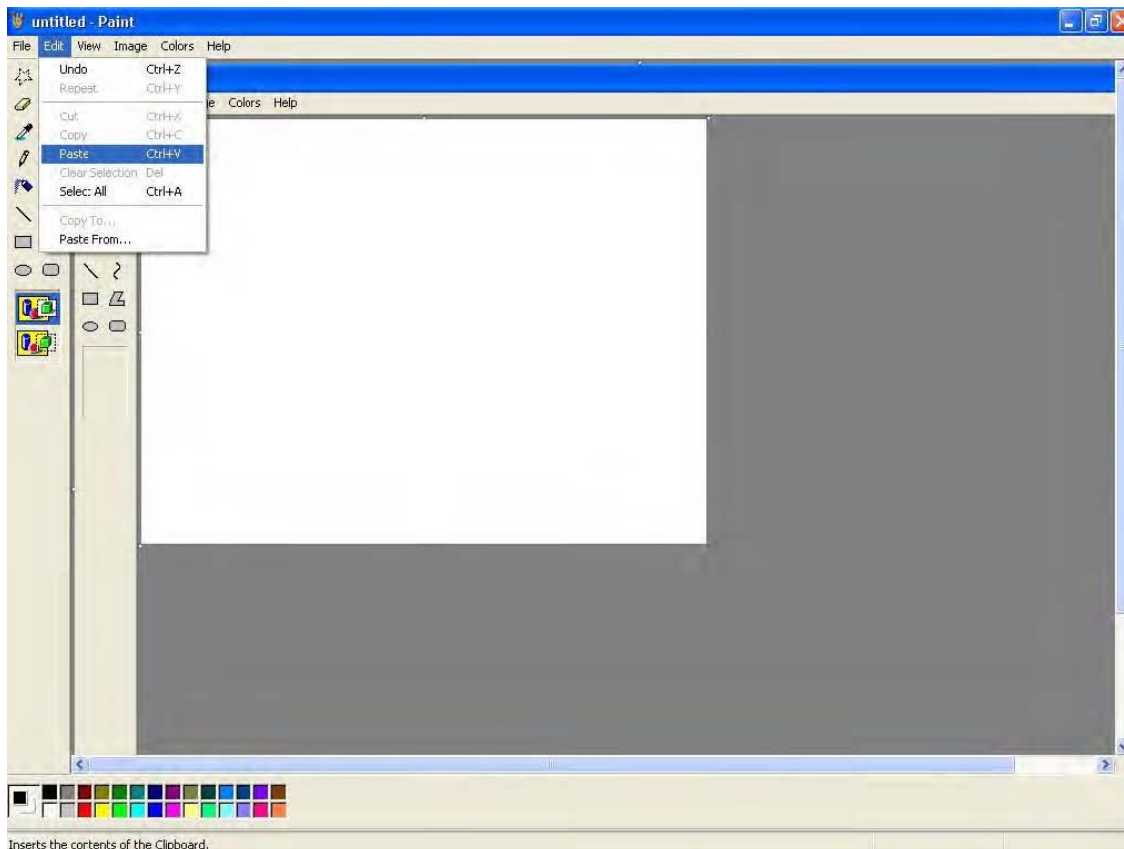
Then move your mouse pointer up to All Programs.



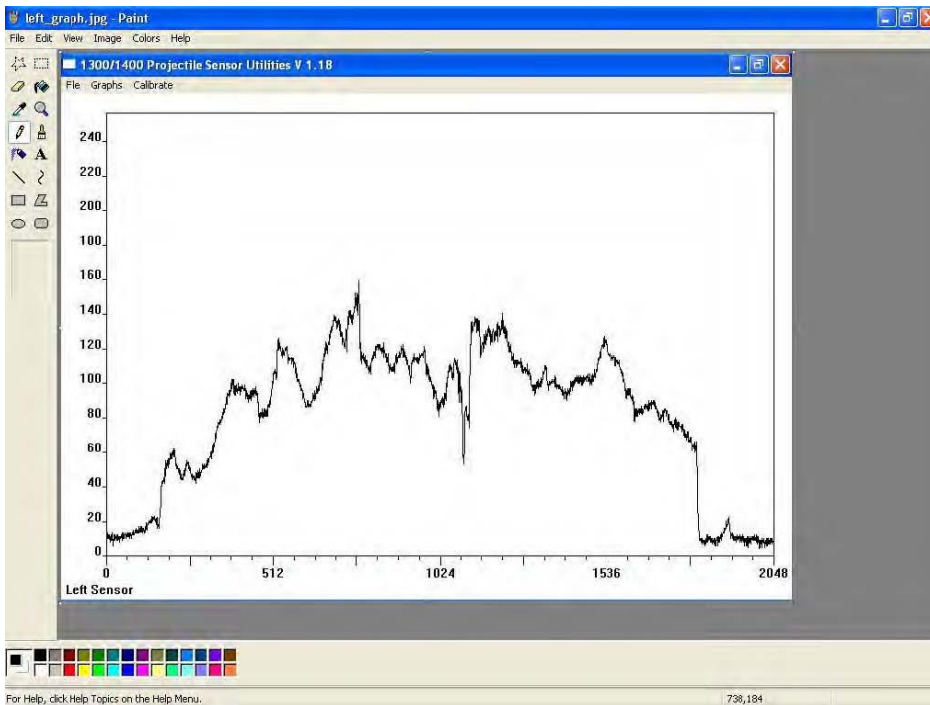
Then up to accessories, and click and then move over to paint and click.



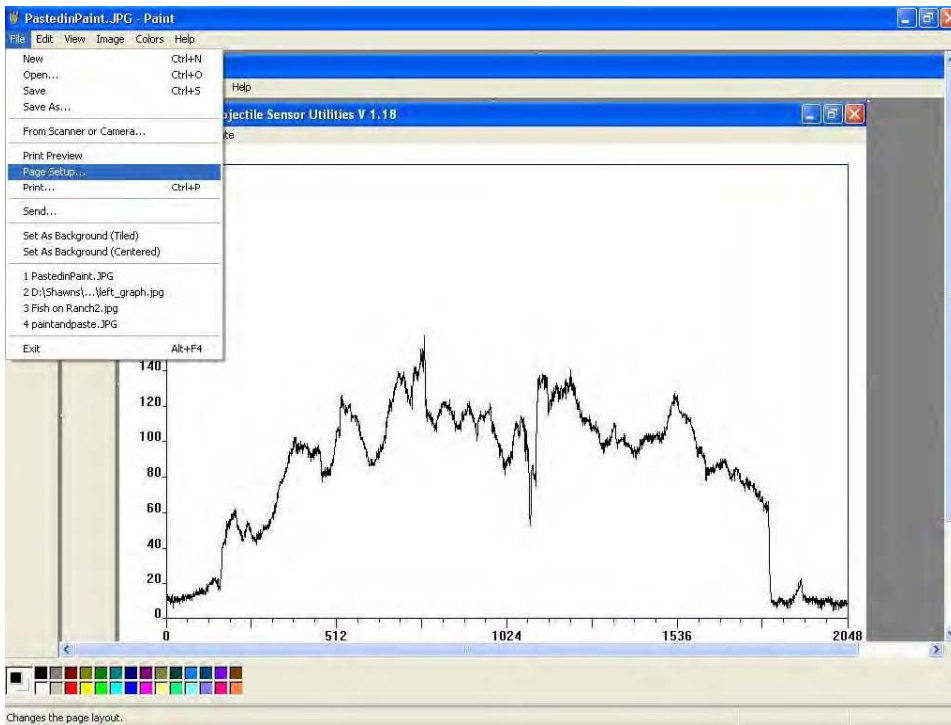
In Paint, select the Edit menu at the top next to File in paint. Move your mouse pointer down to paste and click paste. (Answer yes to question about resizing in paint, if that question comes up.)



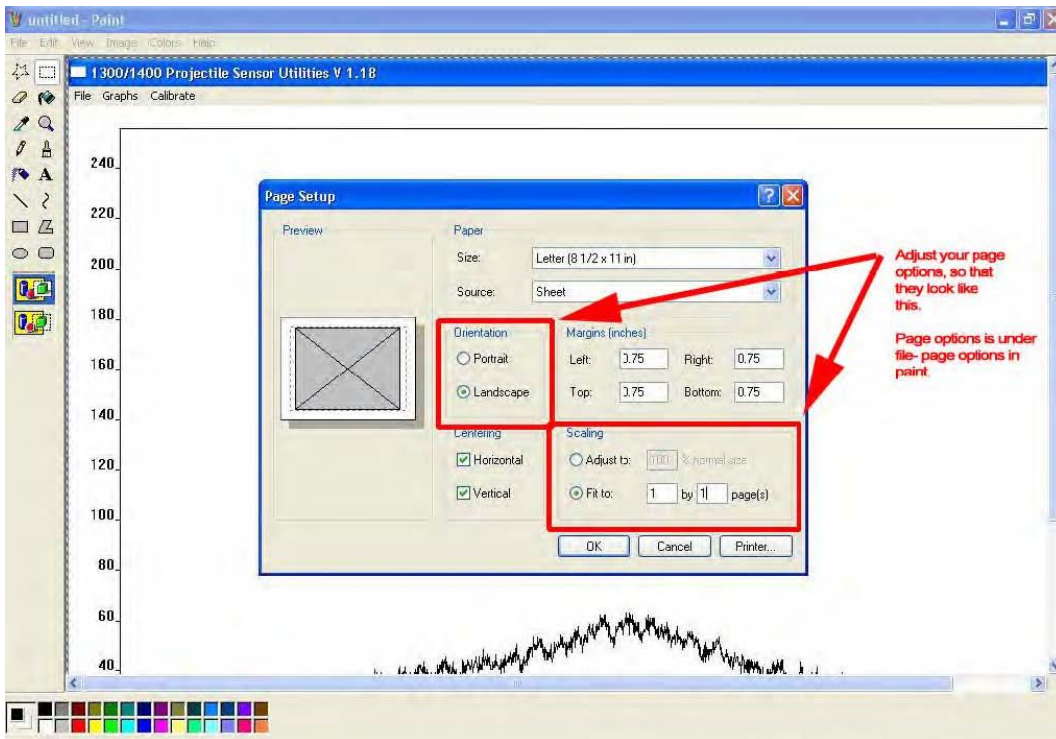
Your Sensor graph now appears in Paint.



Now move your mouse pointer to the word File and then down to page setup and click.

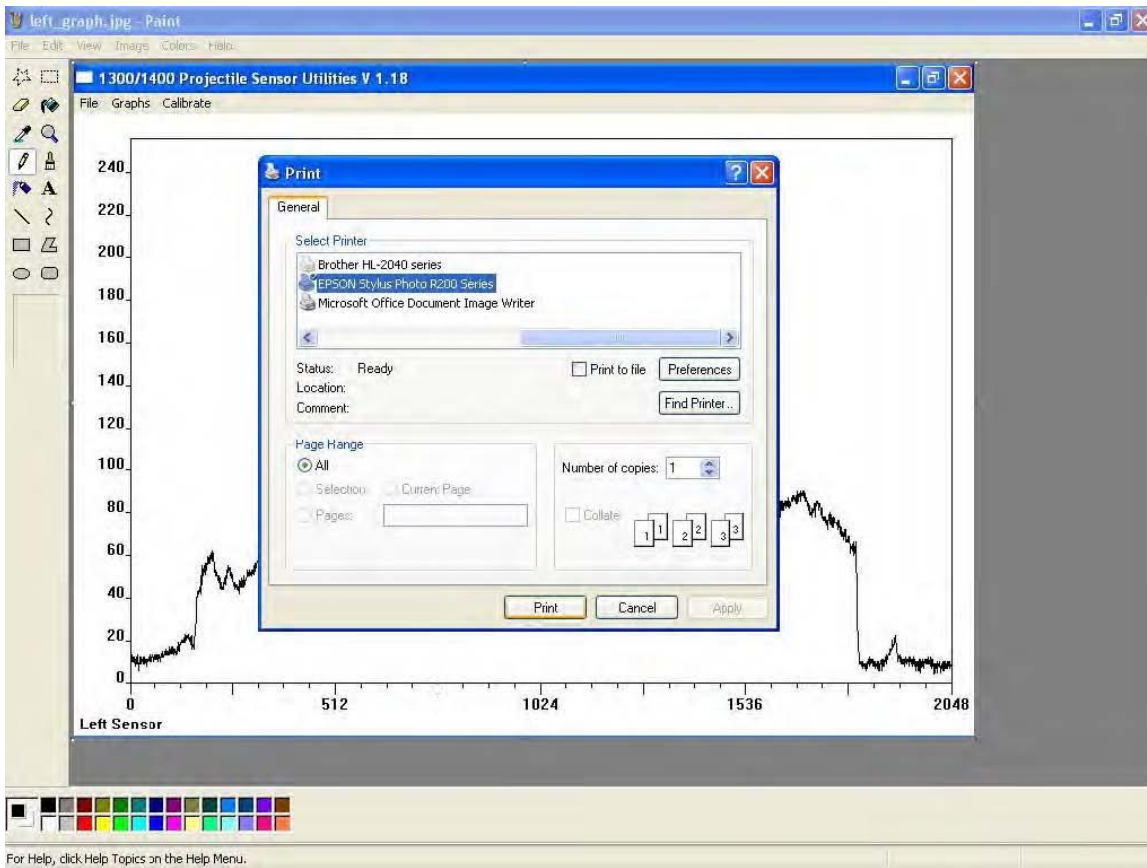


Select landscape under orientation in the page options window and then click ok to close. (Note if you close Paint, the page options you just changed will revert to the Windows default settings and you will need to change them again.)



Move your mouse pointer to File and then move down with your cursor and select print.





Now select the printer if you have more than one and then select print in the printer window. The printer should now begin printing your graph. Repeat this print screen procedure for each of your respective sensors and fax or email them to Archery Interactive. Fax number: 303-531-4867 Email: support@technohunt.com